



I4 / DX / X Series

Cutter Installation Guide



Part No : 49-20008-001
Revision Date : Nov. 2016

Note:

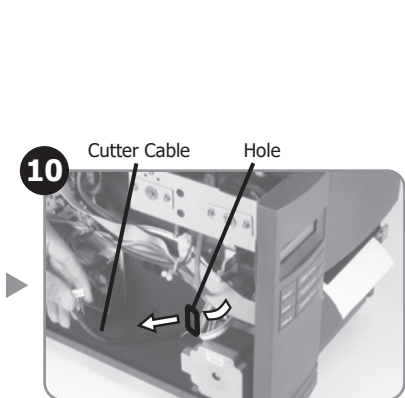
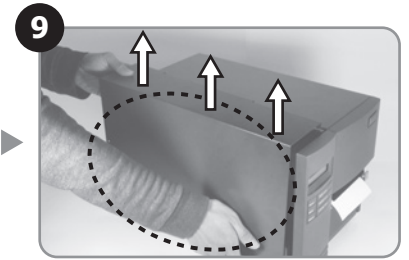
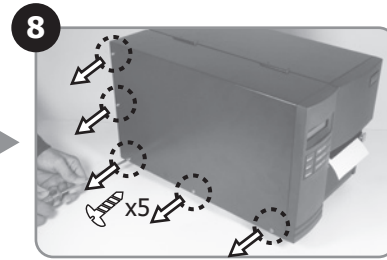
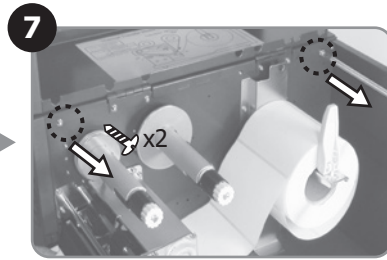
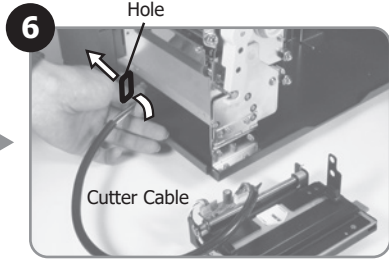
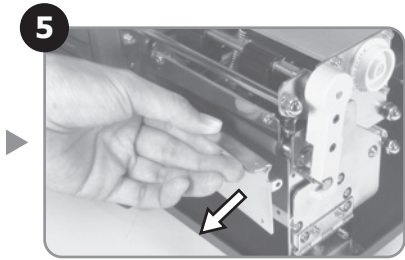
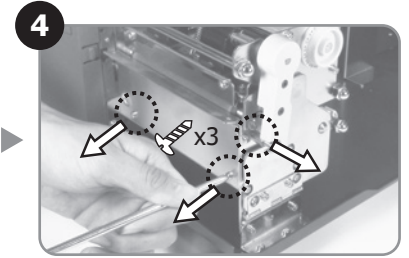
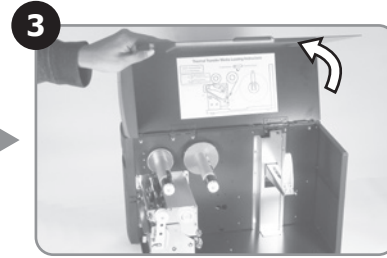
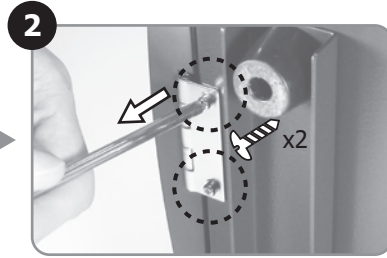
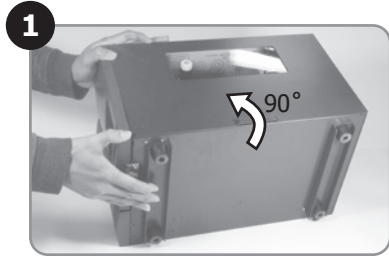
*Except for the new full cutter, all the other cutters DO NOT cut on media with glue. For more details, please refer to the cutter specification in the user's manual.
*Specifications, accessories, parts and programs are subject to change without notice.

Argox Information Co., Ltd.

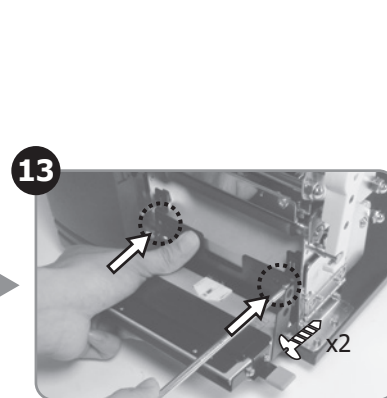
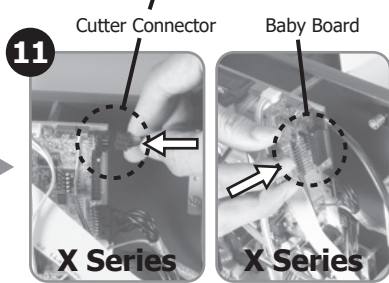
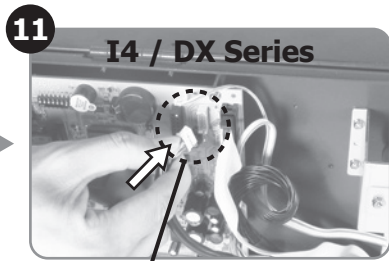
7F., No.126, Ln.235, Baoqiao Rd., Xindian Dist.,
New Taipei City 231, Taiwan (R.O.C.)
Tel: +886-2-8912-1121 Fax: +886-2-8912-1124
<http://www.argo.com>

Copyright © 2016. Argox Information Co., Ltd. All Rights Reserved.

START



※ Peeler cable also goes through this hole



※ Screw at the utmost left and right sides

