

Upgrade System

1. System Requirement:

- Software: PhoenixVoler
- Hardware: PI-1010 / PI-1030 and PC.
- Firmware: Bin file for upgrade.(in Upgrade folder)

2. Upgrade Procedure:

In Force Mode:

- When reset PI-1010 / PI-1030, please power off the terminal, and press combine key "1+3" (don't release this combine key), then press power key to power on. After power on, you can release combine key and enter to Force mode.



- Then connect to PC and wait for communication.
- Force mode is only for firmware upgrade.
- After upgrade in force mode, all of user settings will be reset.

In Supervisor Menu:

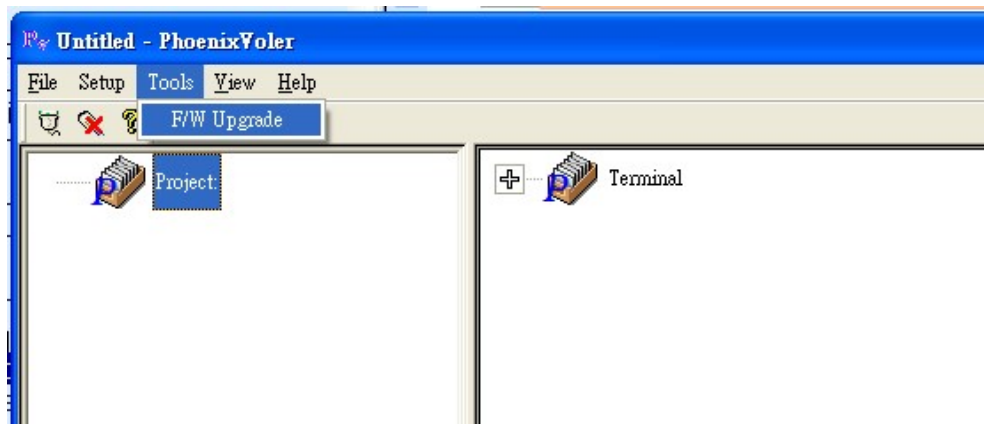
- When reset PI-1010 / PI-1030, please power off the terminal, and press combine key "1+3+0" (don't release this combine key), then press power key to power on. After power on, you can release combine key and enter to Supervisor Menu.



- And input password “00000” -> Remote Link -> Connect. Then connect to the PC and wait for communication.
- Only Supervisor Menu’s Remote Link can upgrade firmware.
- Upgrade firmware under Supervisor Menu’s Remote Link, all of user settings will not be reset.

In PhoenixVoler:

- Execute PhoenixVoler and select Tools\F/W Update



- Select the FW upgrade file and complete the firmware update.

3. Execute System:

- Restart PI-1010 / PI-1030.