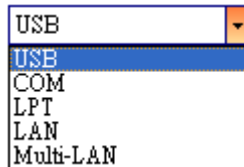


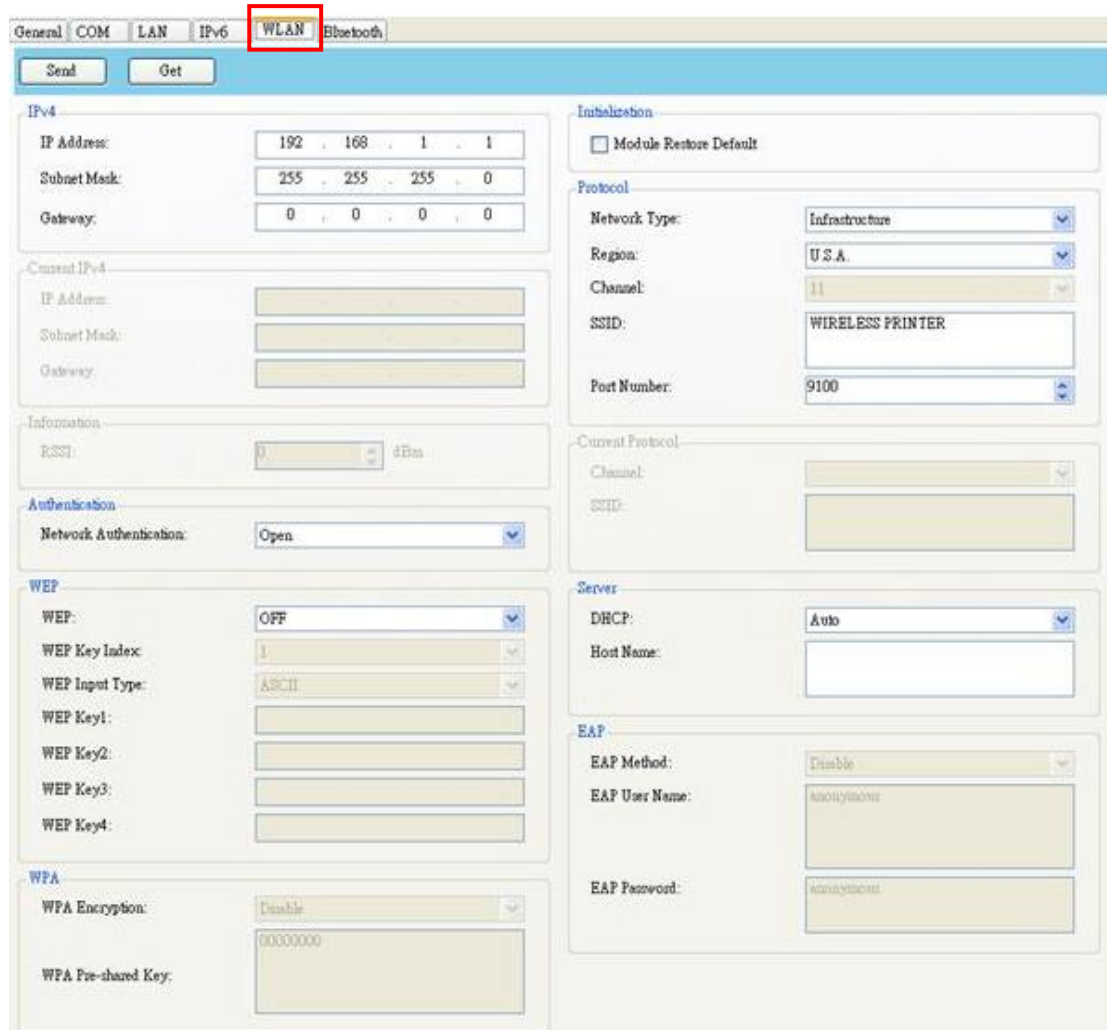
Set up WLAN connection by printer tool

Before you set up a wireless connection, make sure your computer has connected to a wireless network.

1. In the Input/Output Port list, click USB or COM.



2. In the Navigation pane, click Parameter Setting, and click the WLAN tab.



3. In the Protocol box, please select the Network type, region, SSID.

Protocol

Network Type:	Infrastructure
Region:	Taiwan
Channel:	11
SSID:	Test
Port Number:	9100

- In the Network type, it determines how you connect your printer to a network.
Infrastructure : If you connect through an access point, select this.
Ad hoc : If you connect through a device which has connected to a network, select this. In Ad hoc mode, you can only use Open authentication.
- Region : select the country.
- In the SSID box, enter the network name you've connected, and do one of the following to enter your password.

4. Select the network authentication.

- If you're using Open and WEP is on, choose your WEP password type in the WEP Input Type list. Next, enter your WEP password in one of the WEP Key box, and select the key you want to use from the WEP Key Index list.

WEP

WEP:	ON
WEP Key Index:	1
WEP Input Type:	ASCII
WEP Key1:	00000000
WEP Key2:	
WEP Key3:	
WEP Key4:	

If you're using WPA-Personal or WPA2 Personal, enter your password in the WPA Pre-shared Key box.

WPA

WPA Encryption:	AUTO
WPA Pre-shared Key:	00000000

- If you're using 802.1X, WPA-Enterprise or WPA2 Enterprise, choose your EAP authentication method in the EAP Method list, and enter your username and password in EAP User Name and EAP Password boxes respectively. If you're using TTLS mode, you can choose the TTLS encryption method from the TTLS Method list.

EAP

EAP Method:	<input type="text" value="EAP-TTLS"/>
EAP User Name:	<input type="text" value="anonymous"/>
EAP Password:	<input type="text" value="anonymous"/>

5. Do one of the following to configure your IPv4 settings:

- If you have a static IP address, fill the IP Address, Subnet Mask and Gateway box under IPv4 according to your network settings, make sure DHCP is disabled, and click Send.

IPv4

IP Address:	<input type="text" value="155 . 181 . 255 . 28"/>
Subnet Mask:	<input type="text" value="79 . 210 . 220 . 8"/>
Gateway:	<input type="text" value="255 . 252 . 234 . 220"/>

Server

DHCP:	<input type="text" value="Disable"/>
Host Name:	<input type="text"/>

- If you don't have a static IP address, make sure DHCP is enabled and click Send.

Server

DHCP:	<input type="text" value="Enable"/>
Host Name:	<input type="text"/>

6. After your printer restarts, click Get to get the IPv4 information of your printer. If you are using a static IP address, you'll get the same settings as it is in the previous step; if you are using DHCP, the DHCP server will automatically populate the IP Address, Subnet Mask and Gateway boxes under Current IPv4.

The image shows a screenshot of a printer's network configuration interface. It features a section titled "Current IPv4" with three input fields. The "IP Address" field contains "192 . 168 . 0 . 120". The "Subnet Mask" field contains "255 . 255 . 255 . 0". The "Gateway" field contains "192 . 168 . 0 . 1".

Appendix

Network Type	<p>It determines how you connect your printer to a network.</p> <p>Infrastructure : If you connect through an access point, select this.</p> <p>Ad hoc : If you connect through a device which has connected to a network, select this. In Ad hoc mode, you can only use Open authentication.</p>
Region	The country or region.
Channel	The Wi-Fi channel. You need to use the same channel as other devices for communication. The available channel varies according to your region.
SSID	The service set identifier. It is the name of a wireless network.
Port Number	The wireless LAN port number of your printer.
DHCP	<p>Auto : It tries to get an IP address from a DHCP server first. If failed, it uses the specified one.</p> <p>Enable : It keeps trying to get an IP address from a DHCP server until it succeeds.</p> <p>Disable : It uses the specified IP address.</p>