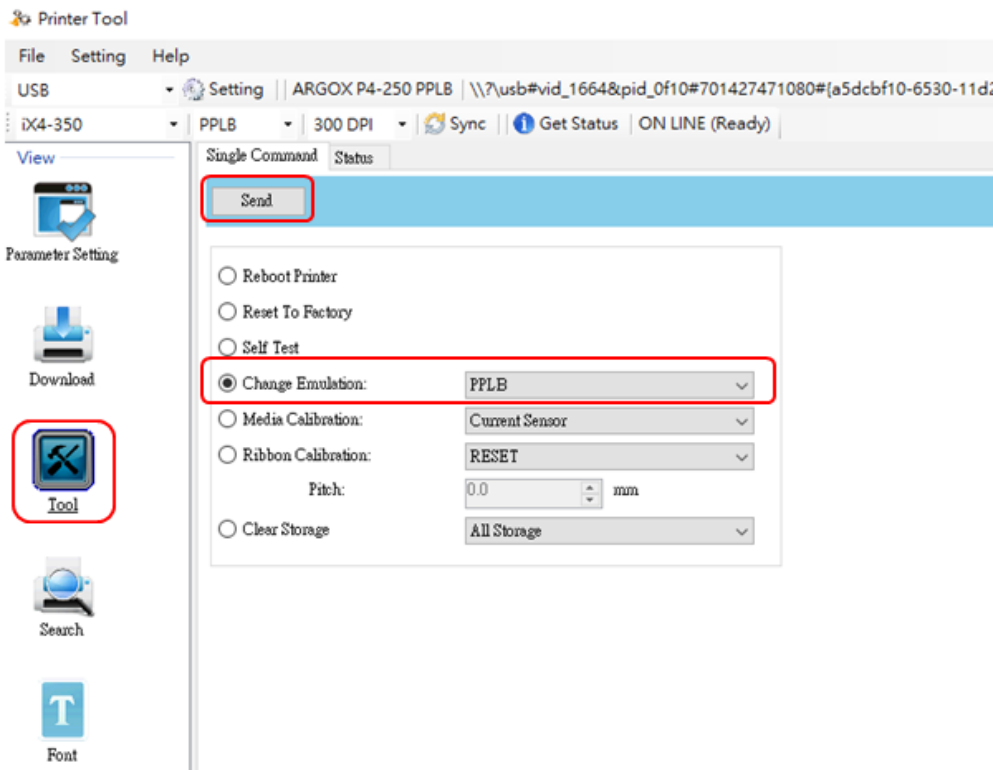


# Standalone Form-making Guide

This is a guide to configuring Argox's printers into the standalone mode.

**Note:** The standalone mode is only applicable to the printer language of PPLB.



## Hardware Requirement

Argox I4 /iX4 printer

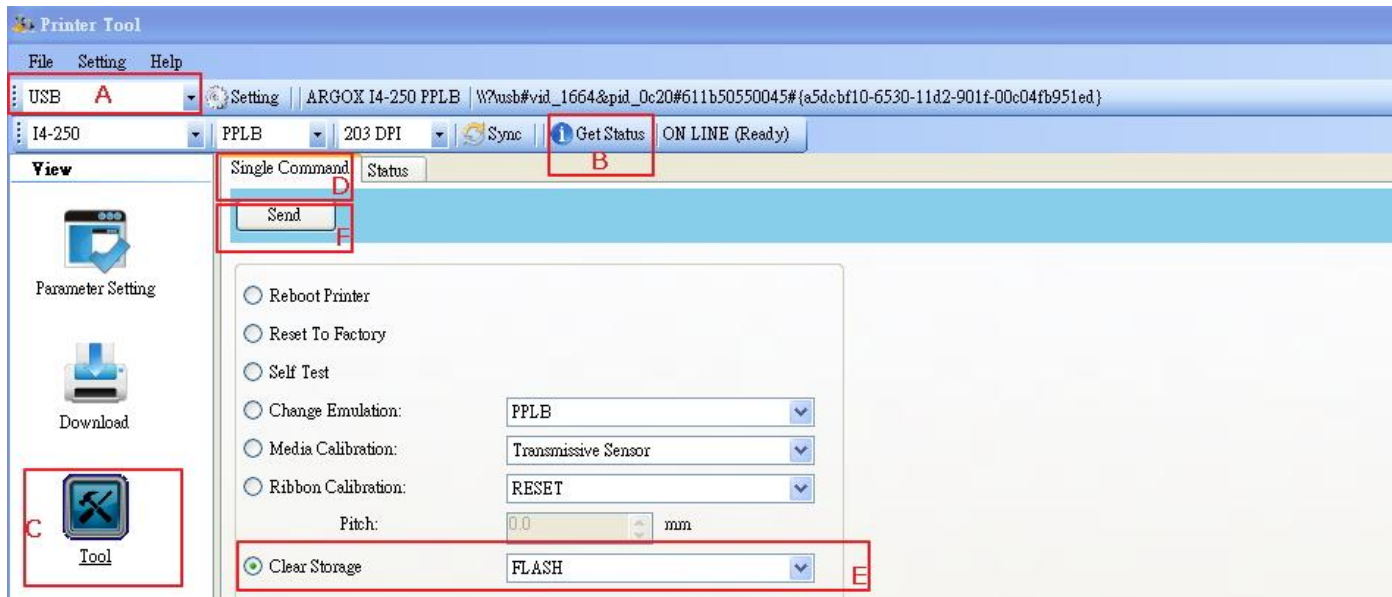
## Software Requirement

Printer tool

BarTender (version 10.xx)

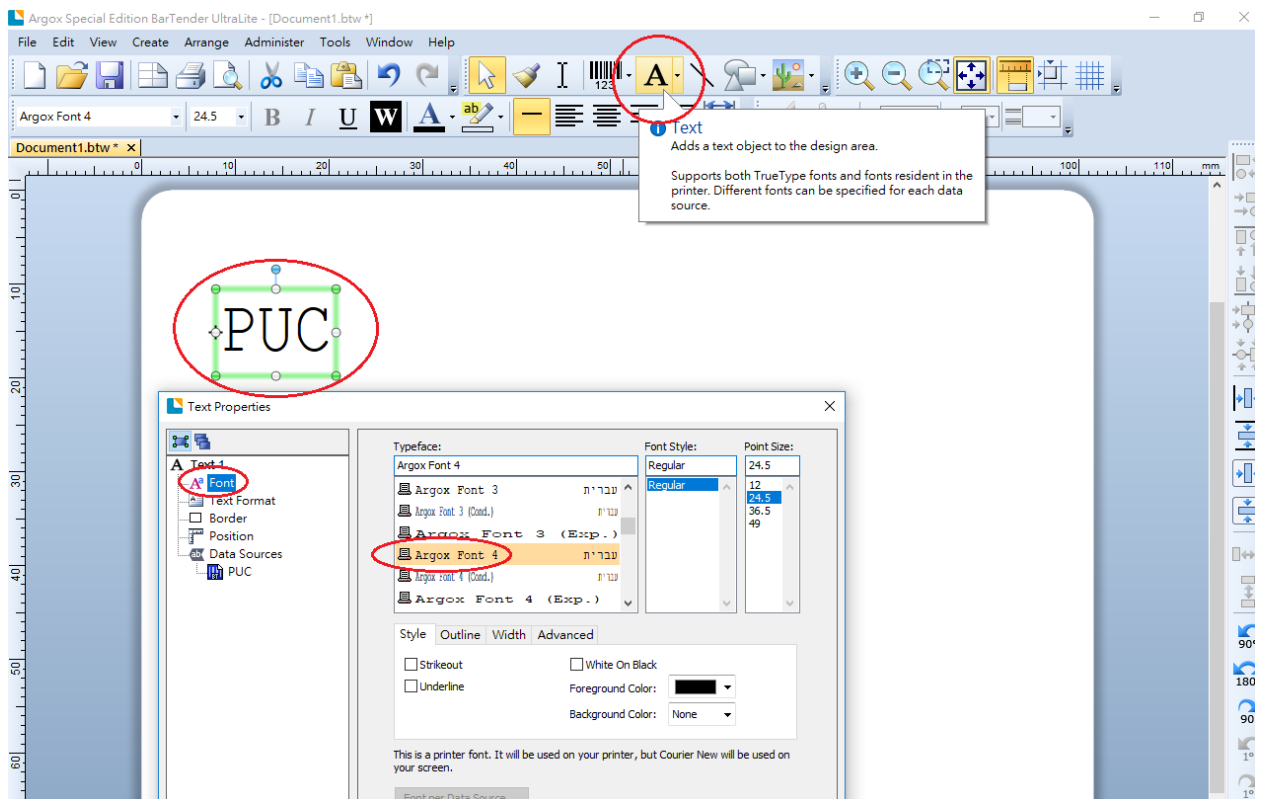
1. Connect printer to computer.
2. Power on printer.

3. Launch Printer Tool
  - A. Select the interface connected with computer.
  - B. Click “Get Status”, make sure the printer is ON LINE(Ready).
  - C. Click “Tool”.
  - D. Select “Single Command” tab.
  - E. Click “Clear Storage” and select All storage (FLASH).
  - F. Click “Send” button.

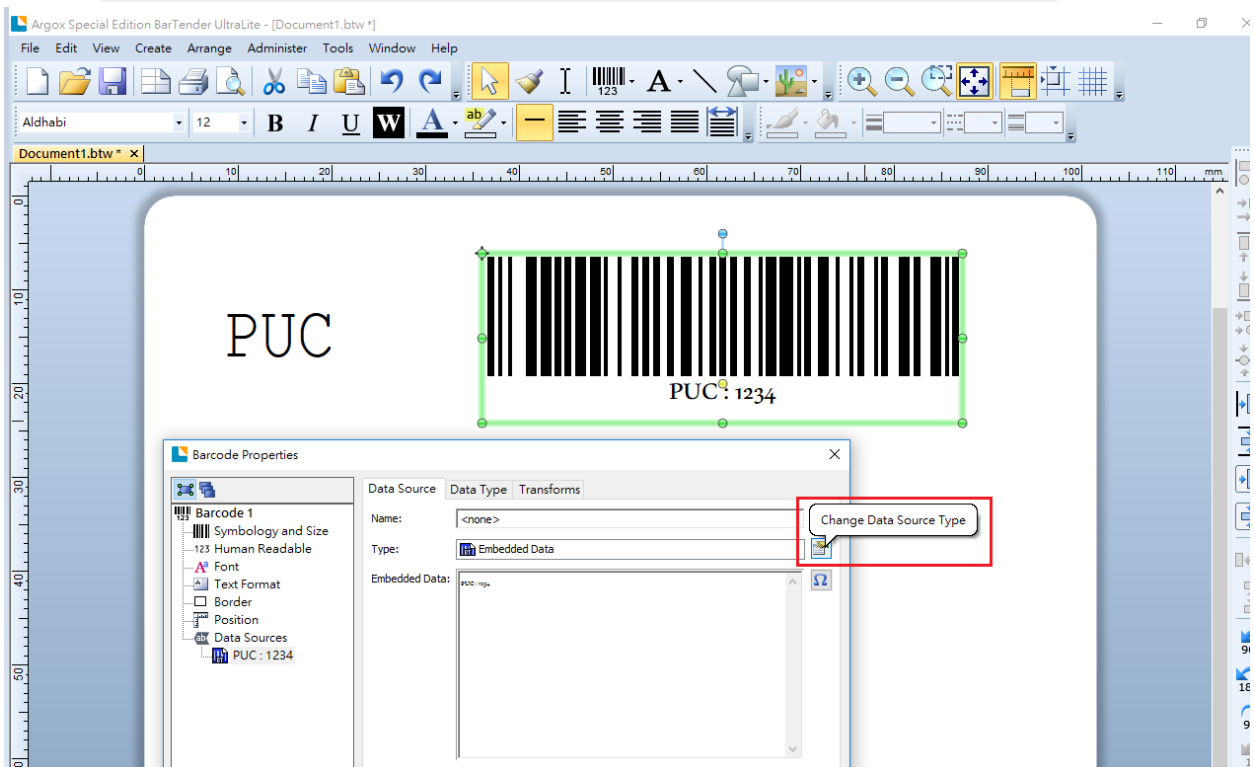
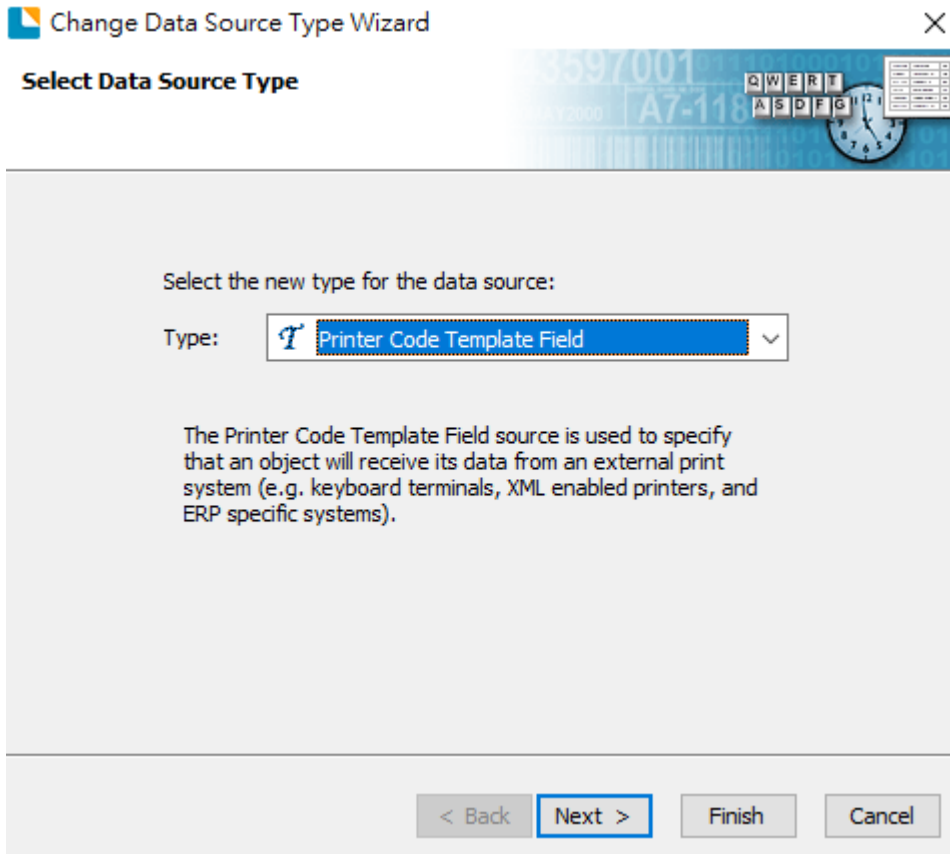


4. Restart printer.
5. Launch BarTender and set label format for the label you are going to use.

6. Add a text and double click it.
  - A. Select the font from the side bar
  - B. Must choose the Argox Font (1~5)



7. Add a barcode and double click it.
  - A. Select the data source from the side bar
  - B. Change the data source type to “ Printer code template field”
  - C. Click “next “button
  - D. Define the “File name” you need (It will shows on the screen)
  - E. Sample file data is a variable number, so just give it any word in this moment.
  - F. Click the finish button



**Change Data Source Type Wizard**

**Printer Code Template Field**  
Specifies the name of the Printer Code Template Field

Select the desired printer code template field name from the list below. If the Field Name list is blank, then enter a field name for use with your print system.

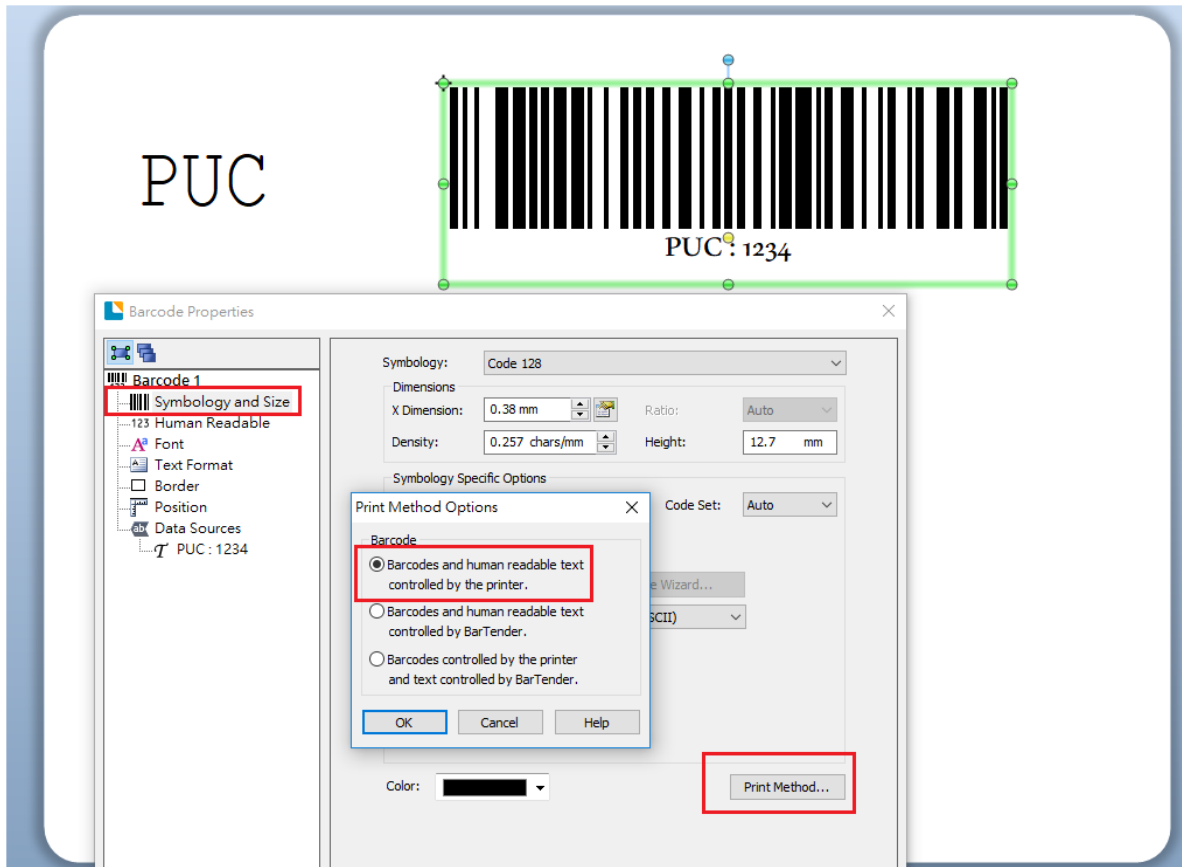
Also, please type in a sample representation of the selected field's data.

Field Name:

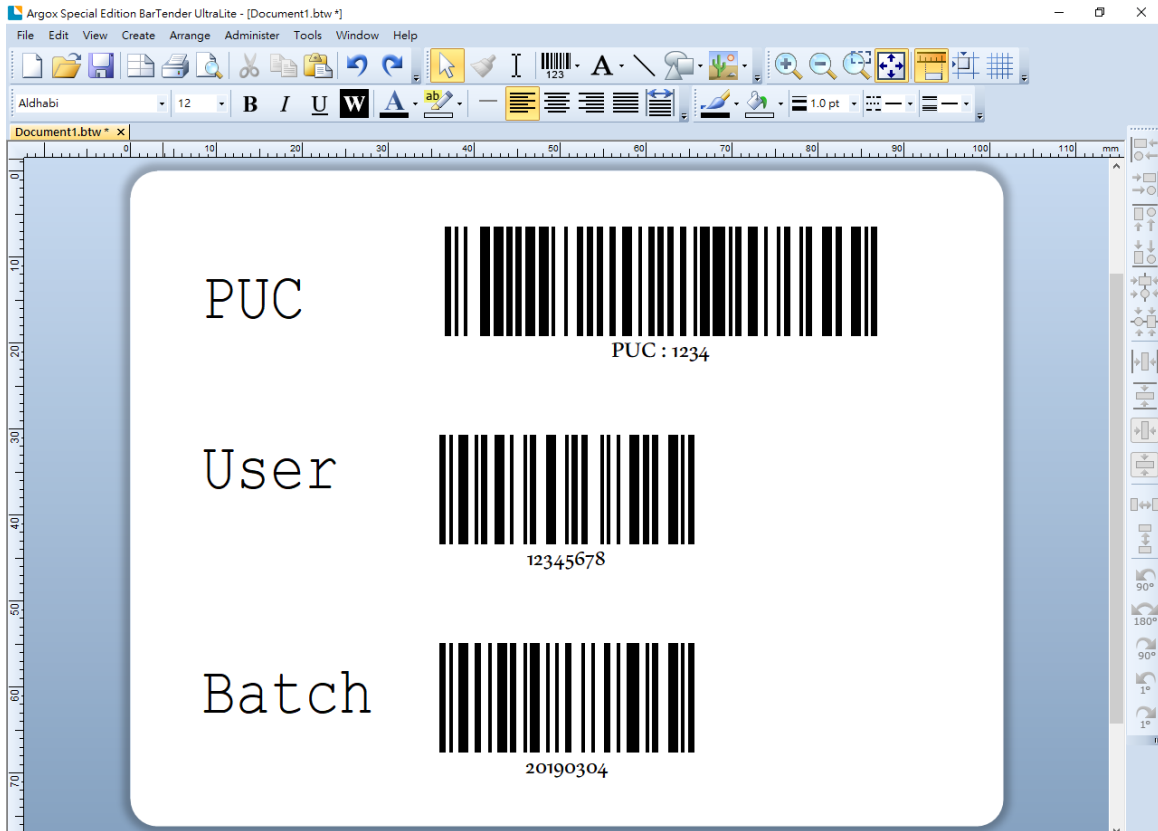
Sample Field Data:

< Back   Next >   Finish   Cancel

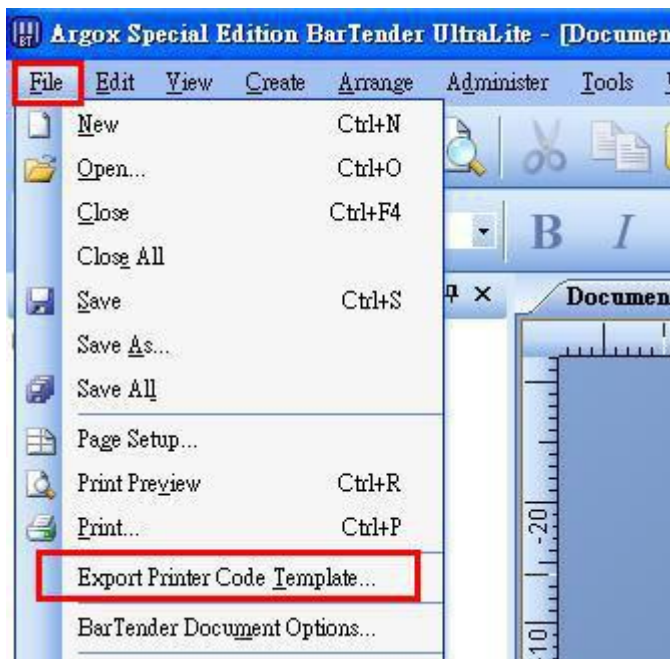
8. Change the print method
  - A. Double click the barcode and select the “Symbology and size” from the side bar
  - B. Change the print method to “barcode and human readable text controlled by printer”



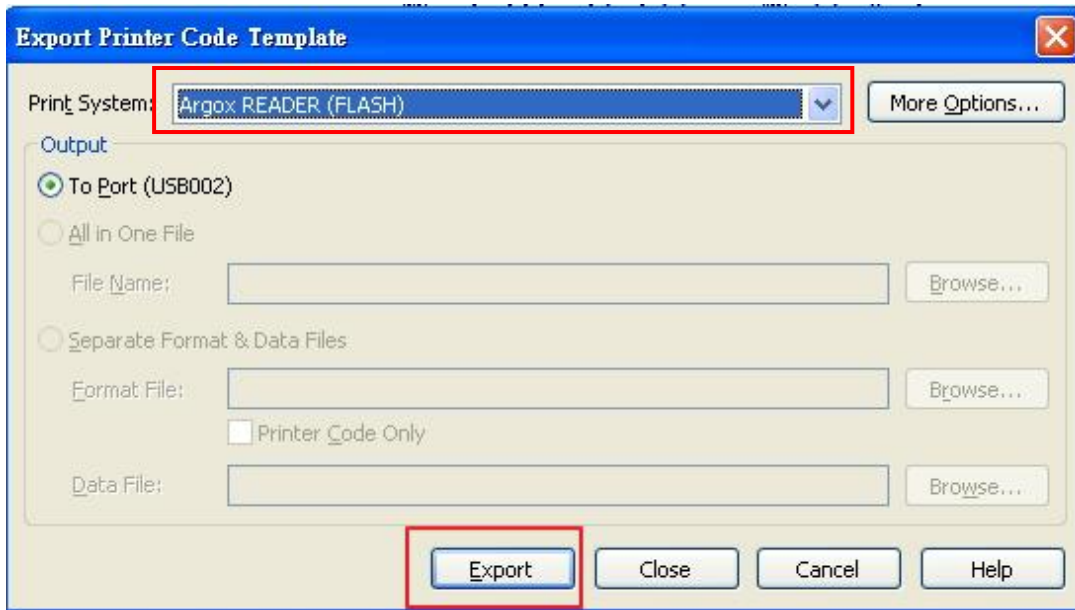
9. Repeat the steps 6 to 8 to create more variable barcode you need.
10. Finish (three variable barcodes form in one template)



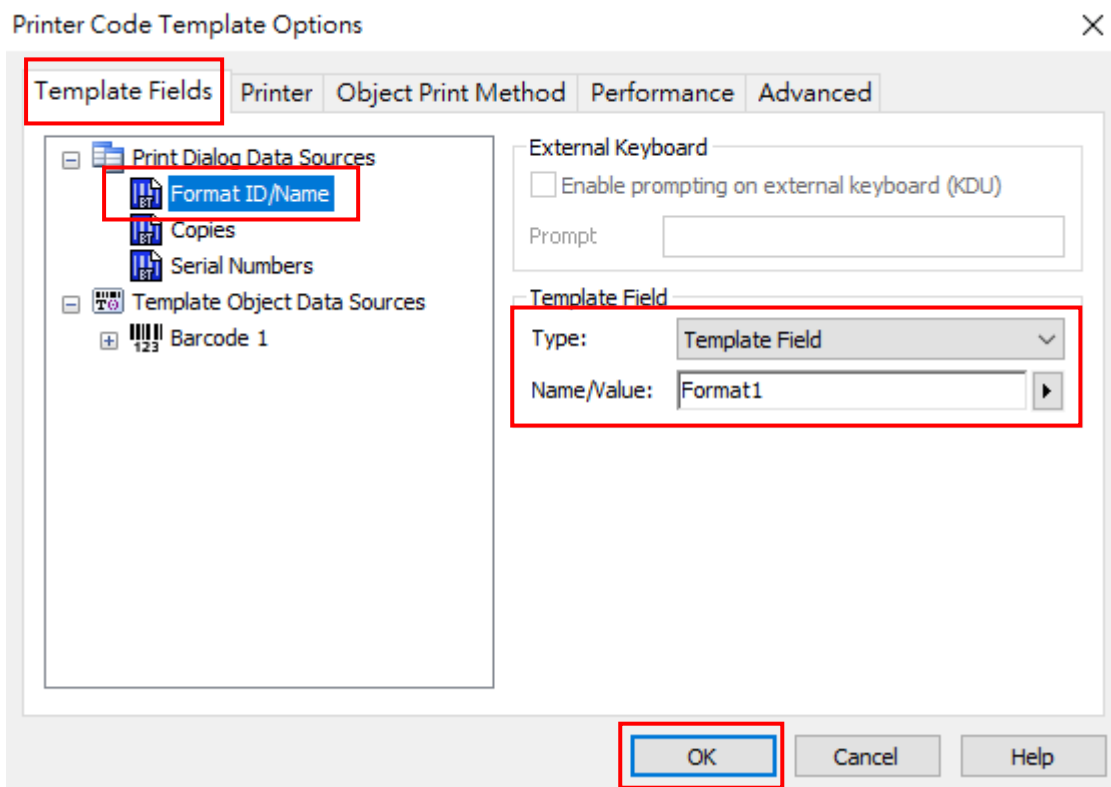
11. Click “File” button and select the item “Export Printer Code Template...”.



12. Select “Argox READER (FLASH)” and export to printer.

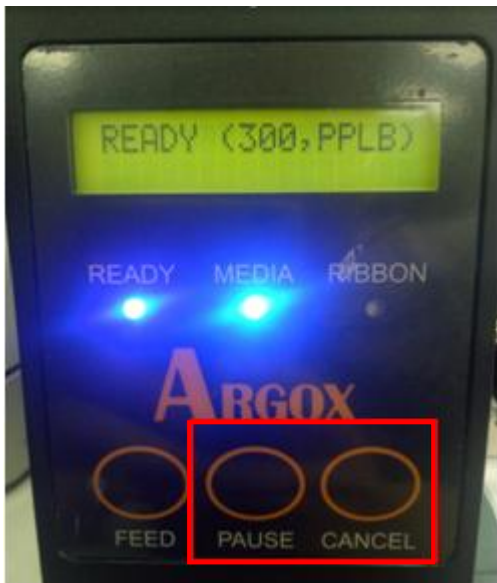


13. Click “Template Fields” tab, and setup the form name/type.





14. Press the “pause” and “cancel” at the same time



15. Press the pause button go to “standalone mode” page, and press feed button to select yes, then press cancel to confirm it.

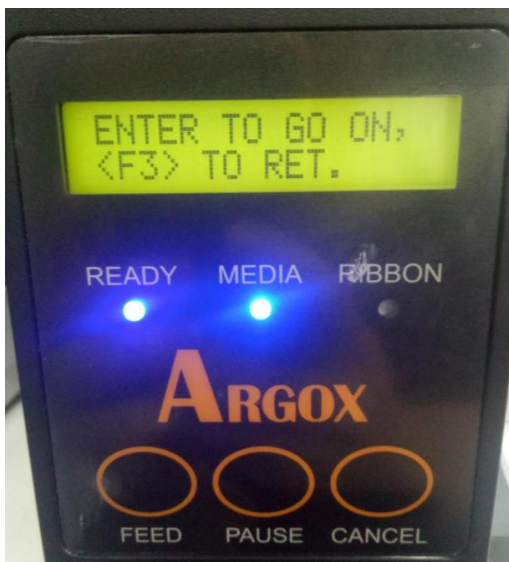


16. Continuously press “pause” or press the “pause” and “cancel” at the same time to jump out this page.

17. Press the <F2> on the keyboard to enter the form select



18. Press <F1> on keyboard to select the form you want, and then press <Enter>.
19. Follow the on-screen instructions to input data, label count, and copies.
20. Press <F3> on keyboard to enter the forms menu.



**\*\*\*In the parameter setting page , go to “standalone mode” and select “No” to exit the standalone mode.**