

## OPOS Setup Intruction.

Supported models:

AS8120/8150/8250/8310/8510/8520/8000CL/8020CL.

### 1. Prepare scanners:

A. Make sure scanners cables are RS232 or USB (with C mark) .

- i. **Please Note that HID cable (without C mark) does not support OPOS application.**



- ii. **C mark cable:**

B. Config scanner to adapted to OPOS application with following:

- i. Program: 

Default: 

- ii. Program: 

Baud: 

Interface: 

Exit: 

C. If you need to displace barcode type: turn on this option

- i. On 

D. If you do not want to display barcode type: turn off this option

- i. Off 

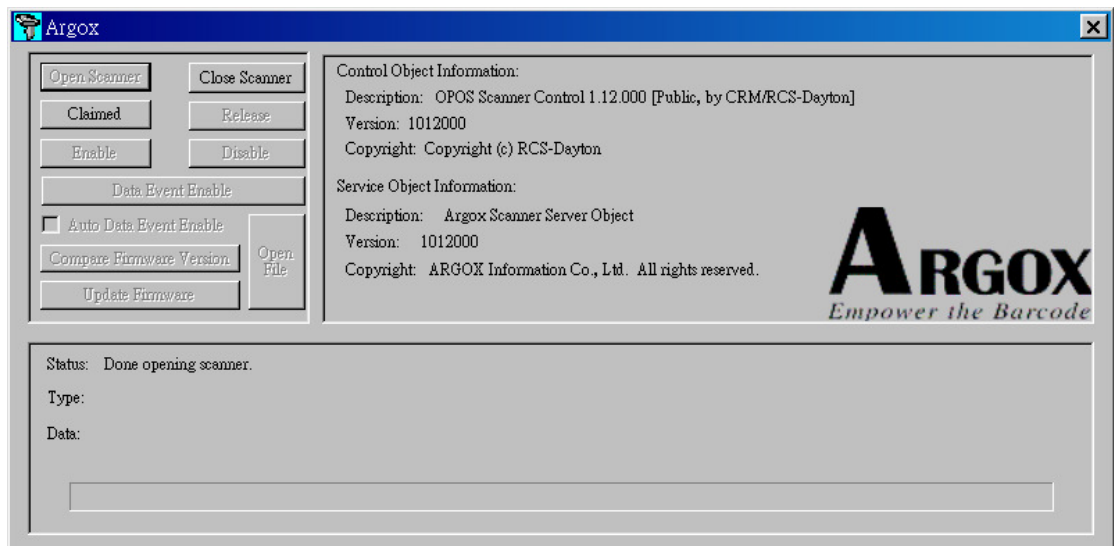
2. If you are using USB (with C mark) cable, install virtual com driver from C:\Program files\ARGOX\ArgoxOpos\vcom\_driver\, or execute C:\Program

files\ARGOX\ArgoxOpos\vcom\_driver\CP210xVCPInstaller.exe directly.

3. Find out which com port scanner is connected to.
4. Execute C:\Program files\ARGOX\ArgoxOpos\ComSetup.exe to generate appropriate ComSetup.ini, so ArgoxApplication.exe can read scanner through OPOS driver.
  - A. Please note that do not change Baud, Parity, Data bit, and Stop bit, or you may cause a connection problem.
    - i. Baud:38400, Parity:None, Data bit:8, Stop bit:1



5. OPOS methods:  
CheckHealth, ClearInput, ClearInputProperties, ClearOutput, DirectIO, ResetStatistics, RetrieveStatistics, UpdateStatistics are no Supported.
6. Claim method may take several seconds to obtain scanner information. All of Source code are packed into ArgoxApplication.zip



Scanning Result:

Argox

Open Scanner

Close Scanner

Claimed

Release

Enable

Disable

Data Event Enable

☒ Auto Data Event Enable

Compare Firmware Version

Update Firmware

Open File

Control Object Information:

Description: OPOS Scanner Control 1.12.000 [Public, by CRM/RCS-Dayton]

Version: 1012000

Copyright: Copyright (c) RCS-Dayton

Service Object Information:

Description: Argox Scanner Server Object

Version: 1012000

Copyright: ARGON Information Co., Ltd. All rights reserved.

ARGOX

Empower the Barcode

Status: Ready to Scan.

Type: JAN 13/EAN 13

Data: 2112345678917