

D4 Pro series



Best Value in mid-range direct-thermal printer



Best Label-saving Protocol!



Before



The desk was rumpled and surveying the mess of things, the space is limited.

After



The compact D4 Pro series fits into tight spaces. Everything was arranged in perfect order.

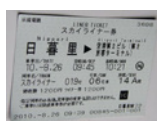
Application



Healthcare



Ticket



Retail

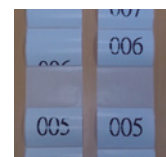


Feature-rich to make daily work simple and easy



printing speed up to 6 inches per second

D4 Pro series in the printing speed is a substantial increase in the maximum speed, which can reach 6 ips.



Ultra Friendly Calibration Modes

Single key Intelli- and Smart-mode calibration performing tasks immediately after installation.



Seamless-converting to Argox printers!

Automatic Language Emulation Detection

Automatic adopting commonly used printer control languages for maximized user friendliness. (Auto-Detection & Auto-Conversion)



Multiple Interfaces

The D4 Pro series has built-in Ethernet, USB host, USB device, RS-232 and it can be expanded with Wi-Fi, Bluetooth v2.1.

*Sales representative for demonstration video.

Print Specifications	D4-250 Pro	D4-350 Pro
Printing Method	Direct Thermal	
Printing Resolution	203 dpi (8 dots/mm)	300 dpi (12 dots/mm)
Printing Speed	Max. 6 ips	Max. 4 ips
Printing Length	Max. 100"(2540 mm)	Max. 50"(1270 mm)
Printing Width	Max. 4.25"(108 mm)	Max. 4.16"(105.7 mm)
Memory	128MB SDRAM, 128MB Flash ROM	
CPU Type	32 bit RISC microprocessor	

Consumables Specifications	
Sensors	Reflective sensor x 1 (movable) & Transmissive sensor x 1 (fixed, 6.27mm offset)
Media Type	Roll-feed, die-cut, continuous, fan-fold, black mark, tags, ticket in thermal paper or plain paper
Media	Max. width: 4.65" (118mm). Min. width: 0.88" (22.4mm). Thickness: 0.0024"~0.0075" (0.06mm~0.19mm) 5"(127mm) OD on a 1"/1.5" (25.4/38 mm) ID core; Dealer Option external media stand 8" OD on 1"/3" ID Core

Fonts & Symbologies	
Fonts	Internal character sets standard. 5 alpha-numeric fonts from 0.049" H ~ 0.23" H (1.25mm ~ 6.0mm) Internal fonts are expandable up to 24x24 4 direction 0 ~ 270 rotation. Soft fonts are downloadable Ability to print any Windows True Type font easily. Support scalable font. GB 18030 Standard (Chinese coded character set) support
1D Barcodes	PPLA: Code 39、UPC-A、UPC-E、Code 128 subset A/B/C、EAN-13、EAN-8、HBIC、Codabar、Plessey、UPC2、UPC5、Code 93、Postnet、UCC/EAN-128、UCC/EAN-128 K-MART、UCC/EAN-128 Random weight、Telepen、FIM、Interleaved 2 of 5 (Standard/with modulo 10 checksum/with human readable check digit/with modulo 10 checksum & shipping bearer bars)、GS1 Data bar (RSS) PPLB: Code 39、UPC-A、UPC-E、Matrix 2 of 5、UPC-Interleaved 2 of 5、Code 39 with check sum digit、Code 93、EAN-13、EAN-8 (Standard, 2/5digit add-on)、Codabar、Postnet、Code128 subset A/B/C、Code 128 UCC (shipping container code)、Code 128 auto、UCC/EAN code 128 (GS1-128)、Interleave 2 of 5、Interleaved 2 of 5 with check sum、Interleaved 2 of 5 with human readable check digit、German Postcode、Matrix 2 of 5、UPC Interleaved 2 of 5、EAN-13 2/5 digit add-on、UPCA 2/5 digit add-on、UPCE 2/5 digit add-on、GS1 Data bar (RSS) PPLZ: Code39、UPC-A、UPC-E、Postnet、Code128 subset A/B/C、Interleave 2 of 5、Interleaved 2 of 5 with check sum、Interleaved 2 of 5 with human readable check digit、Code 93、Code 39 with check sum digit、MSI、EAN-8、Codabar、Code 11、EAN-13、Plessey、GS1 Data bar (RSS)、Industrial 2 of 5、Standard 2 of 5、Logmars
2D Barcodes	QR Code, PDF417 (including MicroPDF), DataMatrix (ECC200), GS1 DataMatrix, MaxiCode
Graphics	PPLA: PCX, BMP, IMG, HEX, GDI / PPLB: PCX, BMP, Binary raster, GDI / PPLZ: GRF, Hex, GDI
Emulation	PPLA, PPLB, PPLZ, Auto

Interface Characteristics and Integration	
Operation Interface	LED Indicator x 2, Button(Feed) x 1
Communication Interface	USB device, RS-232, Ethernet, USB host
Drivers	Windows Vista/Win7/Win8/Win10, LINUX Driver, macOS Driver, Raspberry Pi Driver
Software	BarTender, Printer Tool, Font Utility
Application	iLabelPrint+
Database Link	Argobar Pro support ODBC Database Connection: Excel, CSV, MS Access, MS SQL, Oracle MySQL, dBASE (*.dbf)

Operating & Environment Characteristics	
Power Source	Universal Switching Power supply. AC input voltage: 100~240V, 50~60Hz. DC Output: 24V, 2.5A
Operation Environment	Operation Temperature: 41°F~104°F (5°C~40°C), 0% ~ 90% non-condensing, Storage Temperature: -4°F~140°F (-20°C~60°C)
Agency Listing	CE, FCC, UL, RoHS, BSMI, CB, IC

Physical Characteristics	
Printer Dimensions	W 183mm x H 166mm x D 225.9mm
Printer Weight	3.88 lbs (1.76 kg)

*Argox reserves the right to enhance and modify the specification without prior notice.
Please check Argox sales representative for most updated specifications.



ARGOX Certified Repair Centers
Consult your local Argox business partners for location and contacts.

Optional Items



Full/partial cutter, guillotine-type



Peeler



WLAN



Bluetooth v2.1 Support BT 2.1 on Android connectivity



External media stand



Argox Information Co., Ltd.

8F., No. 28, Baogao Rd., Xindian Dist., New Taipei City 231029, Taiwan (R.O.C.)
Tel: +886-2-8912-1121 Fax: +886-2-8912-1124 <https://www.argoxt.com> <https://www.youtube.com/user/argoxtmkt>
Copyright © 2024. Argox Information Co., Ltd. All Rights Reserved.