



# CP-EX series



# Best value entry level desktop printer



Best Label-saving Protocol!



## Before



Last generation label printer needs tedious, costly and time consuming setting procedures.

## After

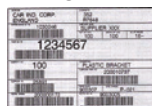


Using smarter new generation desktop printer to save time and money.

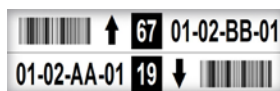
## Application



### Logistics



### Warehouse



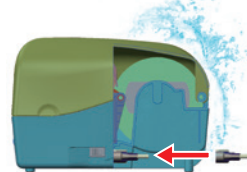
### Manufacturing



### Service Bureau



## Feature-rich to make daily work simple and easy



### Shell Suit design

Interface roof feature can avoid interface from water spill damage and keep machine close to wall, reduce operating space.



### Easy to load media

Large loading space to help media and ribbon installation very easily.



### Durable life

Inherited the turtle spirit, integrated structure makes CP-EX series solid and robust.



### Performance enhance

Print speed is faster 20% than old CP series, expanded SDRAM and Flash ROM can store more fonts, forms, graphics.

Print Specifications	CP-2140EX	CP-3140EX
Printing Method	Direct Thermal & Thermal Transfer	
Printing Resolution	203 dpi (8 dots/mm)	300 dpi (12 dots/mm)
Printing Speed	Max. 6 ips	Max. 4 ips
Printing Length	Max. 100"(2540 mm)	Max. 50"(1270 mm)
Printing Width	Max. 4.25"(108 mm)	Max. 4.16"(105.7 mm)
Memory	32 MB SDRAM, 16MB Flash ROM	
CPU Type	32 bit RISC microprocessor	
Consumables Specifications		
Sensors	Reflective sensor x 1 (movable) & Transmissive sensor x 1 (Center fixed)	
Media Type	Roll-feed, die-cut, continuous, fan-fold, black mark, tags, ticket in thermal paper or plain paper	
Media	Max. width: 4.65" (118mm). Min. width: 0.8" (20mm). Thickness: 0.0024"~0.008" (0.06mm~0.2mm) 5"(127mm) OD on a 1" (25.4mm) ID core	
Ribbon	Ribbon width: 1"~4"(25.4mm~102mm), Ribbon length: Max. 300m. Core size ID: 1"(25.4mm), optional: 0.5"(12.7mm), Core width: 2.6"(67mm) Wax, Wax/Resin, Resin (Ribbon wound ink-side out or ink-side in: auto-detect)	
Fonts & Symbolologies		
Fonts	Internal character sets standard 5 alpha-numeric fonts from 0.049"H ~ 0.23" H (1.25mm ~ 6.0mm) Internal fonts are expandable up to 24x24 4 direction 0 ~ 270 rotation Soft fonts are downloadable Ability to print any Windows True Type font easily. Support scalable font	
1D Barcodes	UPC-A, UPC-E, JAN/EAN, CODE39, CODE93, CODE128, GS1-128 (UCC/EAN128), CODABAR (NW-7), ITF, Industrial 2of5, MSI, UPCadd-on code, POSTNET, GS1 DataBar Omnidirectional, GS1 DataBar Truncated, GS1 DataBar Stacked, GS1 DataBar Stacked Omnidirectional, GS1DataBar Limited, GS1 DataBar Expanded, GS1DataBar Expanded Stacked	
2D Barcodes	QR Code, PDF417 (including MicroPDF), DataMatrix (ECC200), GS1 DataMatrix, MaxiCode	
Graphics	PPLA: PCX, BMP, IMG, HEX, GDI PPLB: PCX, BMP, Binary raster, GDI PPLZ: GRF, Hex, GDI	
Emulation	PPLA, PPLB, PPLZ(Optional)	
Interface Characteristics and Integration		
Operation Interface	LED Indicator x 2, Button(Feed) x 1	
Communication Interface	Ethernet, USB device, RS-232, USB host	
Drivers	Windows Driver for Windows Vista/Win7/Win8/Win10, LINUX Driver, macOS Driver, Raspberry Pi Driver	
Software	BarTender, Printer Tool	
Database Link	Argobar Pro support ODBC Database Connection: Excel, CSV, MS Access, MS SQL, Oracle MySQL, dBASE (*.dbf)	
Operating & Environment Characteristics		
Power Source	Universal Switching Power supply. AC input voltage: 100~240V, 50~60Hz. DC Output: 24V, 2.4A	
Operation Environment	Operation Temperature: 40°F~100°F (4°C~38°C), 10% ~ 90% non-condensing, Storage Temperature: -4°F~122°F (-20°C~50°C)	
Agency Listing	CE, FCC, cULus, CCC, RoHS, BIS, BSMI, KC	
Physical Characteristics		
Printer Dimensions	W 226mm x H 188mm x D 276mm	
Printer Weight	4.6 lbs (2.1 kg)	

\*Argox reserves the right to enhance and modify the specification without prior notice. Please check Argox sales representative for most updated specifications.

### Optional Items



Guillotine Cutter



Rotary Cutter



Peeler



External media stand

Consult your local Argox business partners for location and contacts.



### Argox Information Co., Ltd.

7F., No.126, Ln.235, Baoqiao Rd., Xindian Dist., New Taipei City 231, Taiwan (R.O.C.)  
Tel: +886-2-8912-1121 Fax: +886-2-8912-1124 <https://www.argoxt.com> <https://www.youtube.com/user/argoxtmkt> email: [service@argoxt.com](mailto:service@argoxt.com)  
Copyright © 2020. Argox Information Co., Ltd. All Rights Reserved.