

# iX4 series



# Best Value in light industrial printer class



Best Label-saving Protocol!



## Before



The media capacity of old industrial printer is limited, and it is using more paper to calibration.

## After

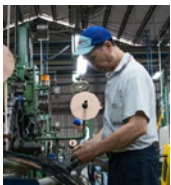
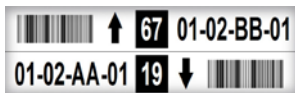


New iX4 series provide large media capacity, new calibration helps to increase efficiency and reduce paper waste.

## Application



### Warehouse



### Manufacturing



### Transportation & Logistics

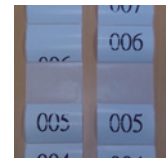


## Feature-rich to make daily work simple and easy



### New Panel Design

Enlarged push button switches make it convenient for users wearing gloves.



### Ultra Friendly Calibration Modes

Single key Intelli- and Smart-mode calibration performing tasks immediately after installation.



Seamless-converting to Argox printers!

### Automatic Language Emulation Detection

Automatic adopting commonly used printer control languages for maximized user friendliness. (Auto-Detection & Auto-Conversion)



### Multiple Interfaces

Built-in Ethernet, Dual USB hosts, USB device, RS-232, and it can be expanded with Wi-Fi, GPIO card/Parallel port.

\*Sales representative for demonstration video.

(iX4-240/iX4-250/iX4-350 only)

Print Specifications	iX4-200	iX4-240	iX4-250	iX4-350
Printing Method	Direct Thermal & Thermal Transfer			
Printing Resolution	203 dpi (8 dots/mm)			300 dpi (12 dots/mm)
Printing Speed	Max. 6 ips		Max. 8 ips	Max. 6 ips
Printing Length	Max. 100"(2540 mm)			Max. 50"(1270 mm)
Printing Width	Max. 4.13"(105 mm)			Max. 4.08"(103.7 mm)
Memory	32 MB SDRAM, 16MB Flash ROM (USB storage up to 32GB)			
CPU Type	32 bit RISC microprocessor			

Consumables Specifications	
Sensors	Reflective sensor x 1 (Movable) & Transmissive sensor x 1(Movable)
Media Type	Roll-feed, die-cut, continuous, fan-fold, black mark, tags, ticket in thermal paper or plain paper
Media	Max. width:4.48"(114mm). Min. width: 1" (25.4 mm). Thickness: 0.0025"~0.01" (0.0635mm~0.254mm) 8.26"(210mm)OD on a 3"(76mm) ID core. 7"(177.8mm) OD on a 1.5"(38mm) ID core
Ribbon	Max. width:4.4"(112mm). Min. width: 1" (25.4 mm). Length:max 450m Wax, Max OD 3.2" (81.3mm). Core size ID 1"(25.4mm). Wax, Wax/Resin, Resin (Ribbon wound ink-side out or ink-side in: auto-detect)

Fonts & Symbolologies	
Fonts	Internal character sets standard 5 alpha-numeric fonts from 0.049"H ~ 0.23" H (1.25mm ~ 6.0mm) Internal fonts are expandable up to 24x24 4 direction 0 ~ 270 rotation Soft fonts are downloadable Ability to print any Windows True Type font easily. Support scalable font
1D Barcodes	UPC-A, UPC-E, JAN/EAN, CODE39, CODE93, CODE128, GS1-128 (UCC/EAN128), CODABAR (NW-7), ITF, Industrial 2of5, MSI, UPcadd-on code, POSTNET, GS1 DataBar Omnidirectional, GS1 DataBar Truncated, GS1 DataBar Stacked, GS1 DataBar Stacked Omnidirectional, GS1DataBar Limited, GS1 DataBar Expanded, GS1DataBar Expanded Stacked
2D Barcodes	QR Code, PDF417 (includingMicroPDF), DataMatrix (ECC200), GS1 DataMatrix, MaxiCode
Graphics	PPLA: PCX, BMP, IMG, HEX,GDI PPLB: PCX, BMP, Binary raster, GDI PPLZ: GRF, Hex, GDI
Emulation	PPLA, PPLB, PPLZ

Interface Characteristics and Integration		
Operation Interface	LED indicator x 3, Button x 3	LED indicator x 3, Button x 3, LCD Display x 1
Communication Interface	USB device, RS-232	USB device, RS-232, Ethernet, USB host x 2
Real Time Clock (RTC)	N/A	Standard
Drivers	Windows Driver for Windows XP(iX4-250 only)/Vista/Win7/Win8/Win10, LINUX Driver, macOS Driver, Raspberry Pi Driver	
Software	BarTender, Printer Tool	
Database Link	Argobar Pro support ODBC Database Connection: Excel, CSV, MS Access, MS SQL, Oracle MySQL, dBASE (*.dbf)	

Operating & Environment Characteristics	
Power Source	Internal Universal Switching Power supply. Input voltage: 100~240V, 50~60Hz
Operation Environment	Operation Temperature: 40°F~104°F (4°C~40°C), 0% ~ 90% non-condensing, Storage Temperature: -4°F~122°F (-20°C~50°C)
Agency Listing	CE, CB, cULus, FCC, ICES, Energy Star, RoHS, BSMI

Physical Characteristics	
Printer Dimensions	W 257 mm x H 263 mm x D 432 mm
Printer Weight	29lbs (13 kg)

\*Argox reserves the right to enhance and modify the specification without prior notice.  
Please check Argox sales representative for most updated specifications.

### Optional Items



Guillotine cutter



Rotary cutter



Peeler



WLAN



GPIO



Parallel



External rewriter



ACRC  
ARGOX Certified Repair Centers

Consult your local Argox business partners for location and contacts.



### Argox Information Co., Ltd.

7F., No.126, Ln.235, Baoqiao Rd., Xindian Dist., New Taipei City 231, Taiwan (R.O.C.)

Tel: +886-2-8912-1121 Fax: +886-2-8912-1124 <https://www.argoxt.com> <https://www.youtube.com/user/argoxmkt> email:service@argox.com

Copyright © 2019, Argox Information Co., Ltd. All Rights Reserved.