
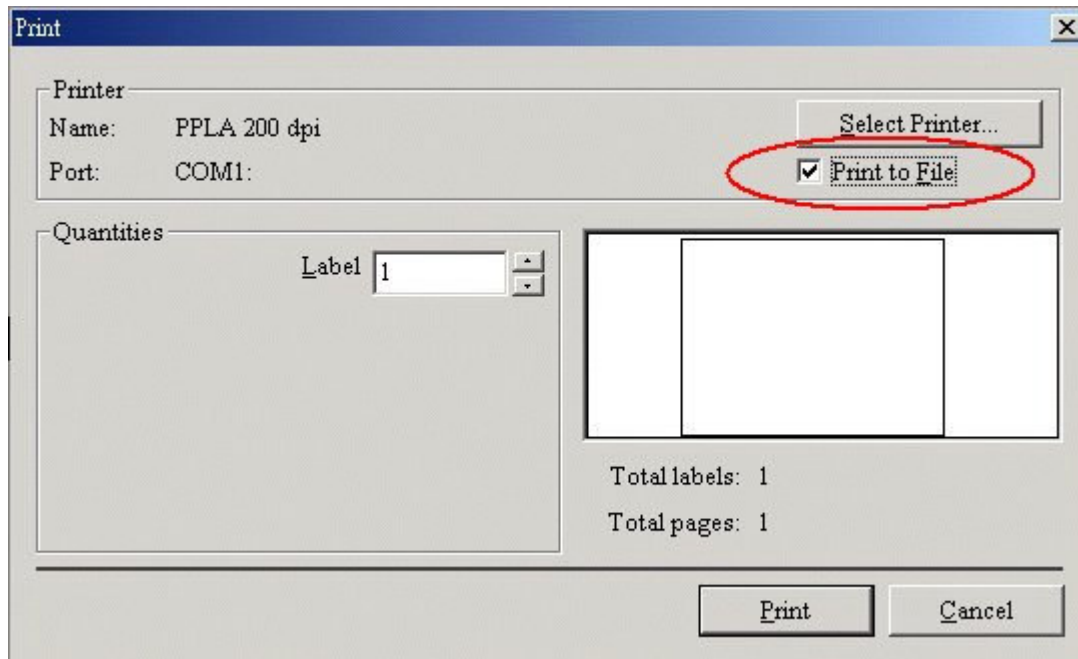
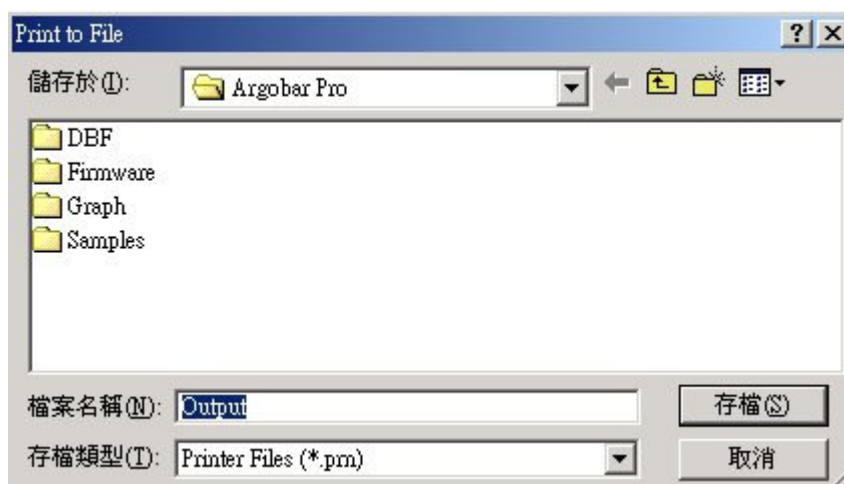


How to Generate Print-to-file (*.prn) from Argobar Lite/Pro

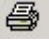
1. Start software, *Argobar Lite/Pro*
2. After completing label design, click the print icon in working window, 
3. Check the field, **Print to File**; and then click **Print**

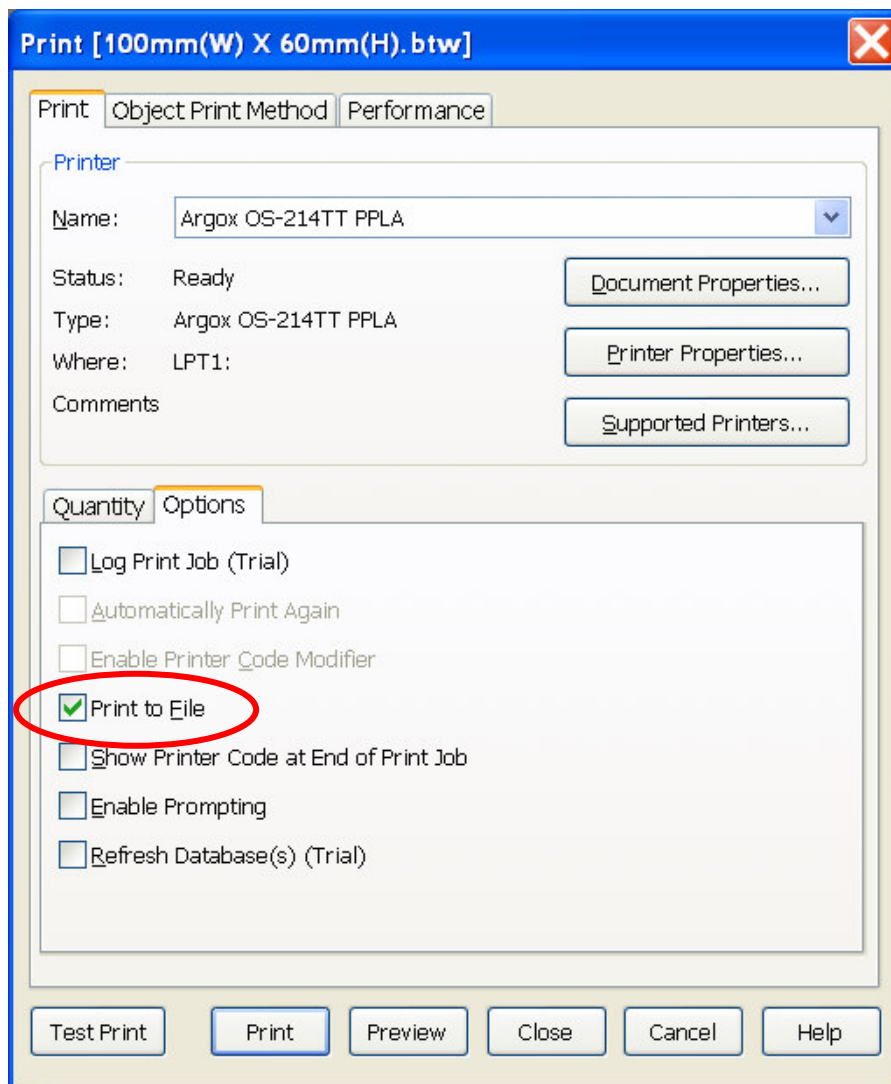


4. Select a directory to store the *.prn file.

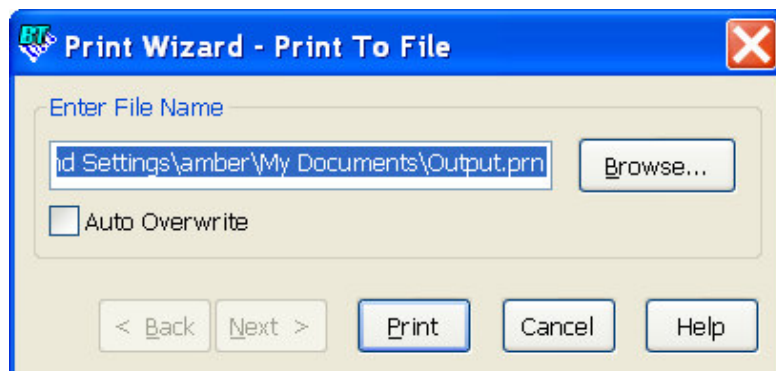


How to Generate Print-to-file (*.prn) from Bartender

1. Start software Bartender
2. After completing label design, click the print icon in working window, 
3. Select **Options** tag and check **Print to File**, then click **Print**.

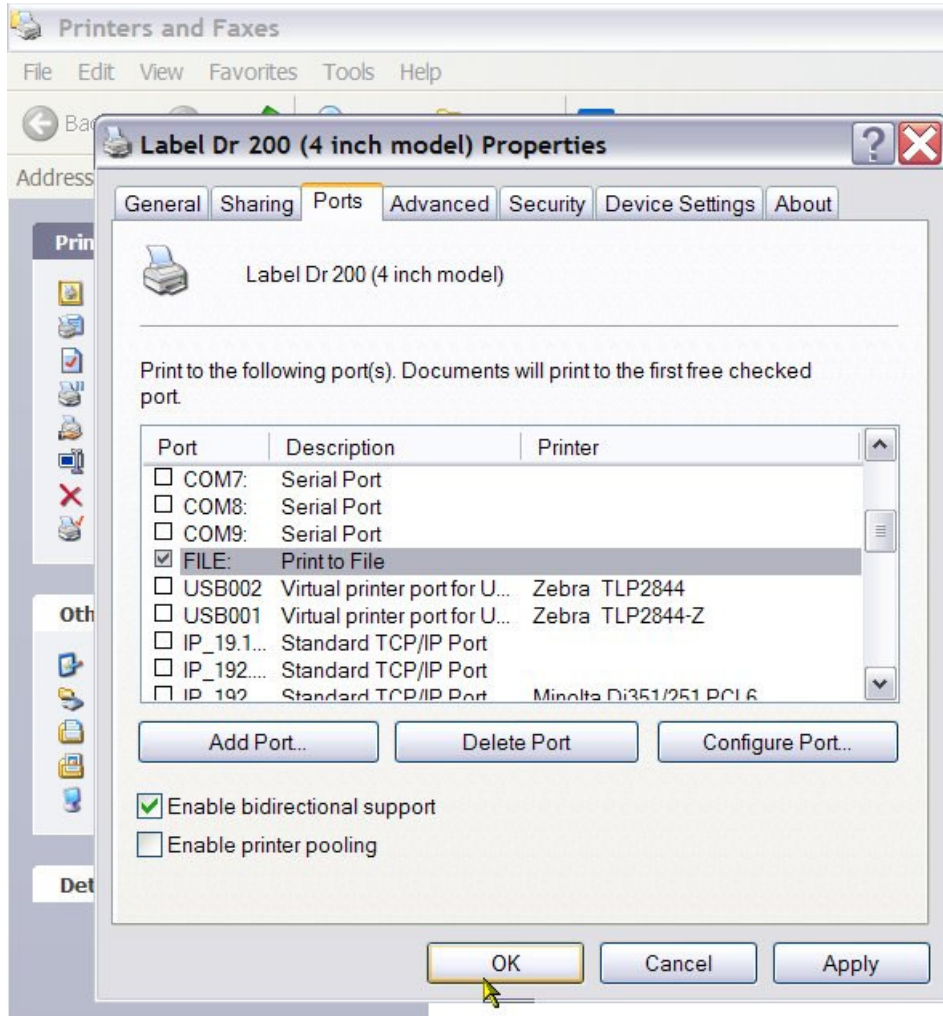


4. Select a directory to store the *.prn file.



How to Generate Print-to-file (*.prn) from driver

1. Go to Start → Settings → Printers and Faxes
2. Select the printer in use; right click on it and go to Properties.
3. Under *Connection*, it is default to *LPT1:*, scroll down and select **FILE** and click *OK*:



4. Go back to your software and ensure this driver has been properly selected. Then, send a print job; the system will ask you to save the file (*.prn)